



Office of the Monroe County Surveyor
Trohn Enright-Randolph

Health Services Building
119 West 7th Street
Bloomington, IN 47404
Phone: (812) 349-2570

Dear User,

The following images were obtained in 2017 by the Office of the Monroe County Surveyor from the State Imaging and Microfilm Laboratory at the Indiana State Archives. The field notes and plats for Monroe County are stored on microfilm Reel 4658 at the Indiana State Archives. Each page provided by the State Imaging and Microfilm Laboratory is approximately 18MB. Our office combined the pages by Township & Range and reduced the resulting pdfs. This process may have caused some degradation in quality. We will provide unreduced images of specific pages if required. Please contact us at 812-349-2570 or at SurveyorsOffice@co.monroe.in.us to request a higher quality image of any specific page.

The pdfs are bookmarked with the original page numbers as assigned by the State Imaging and Microfilm Laboratory.

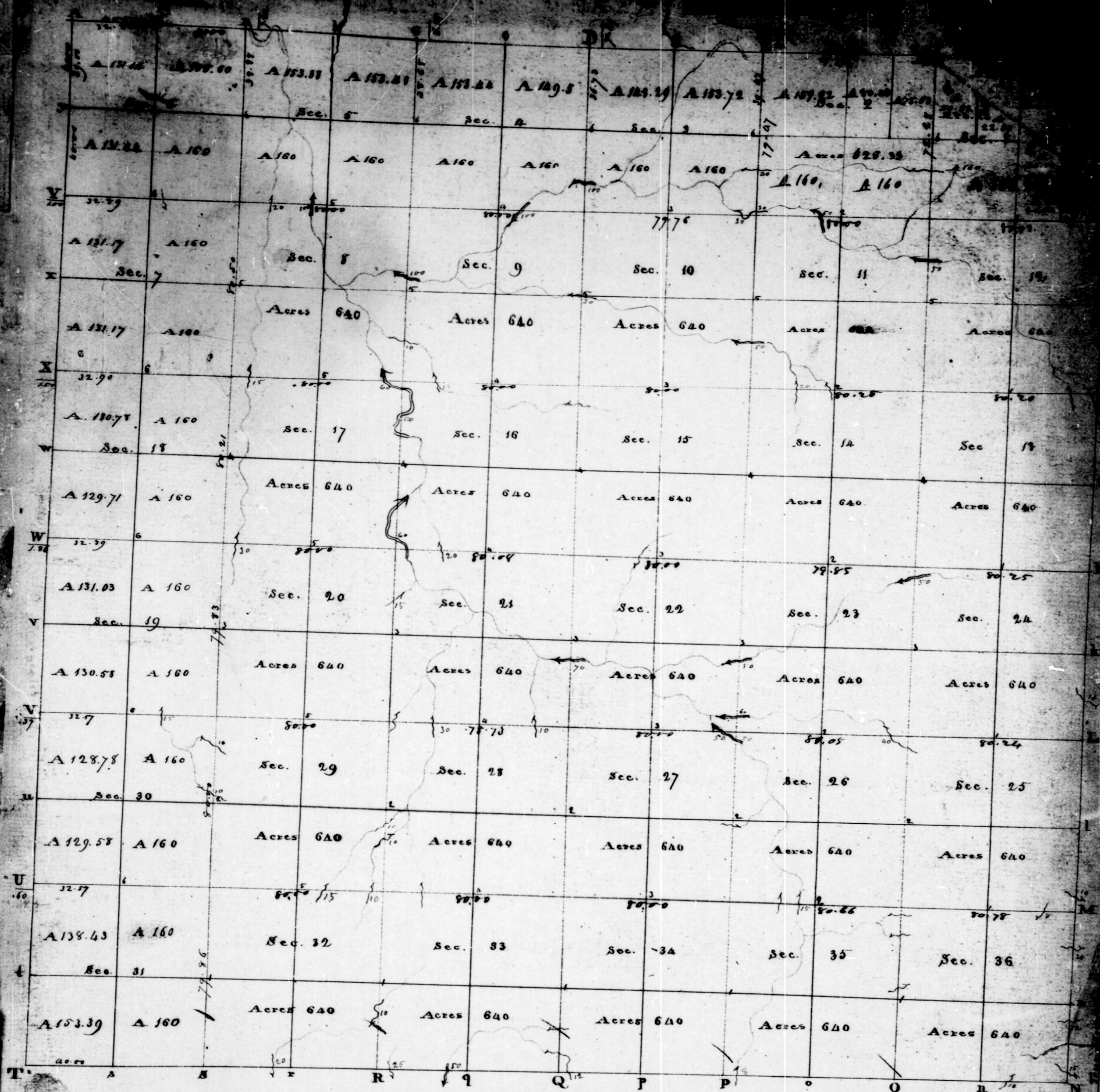
Be prepared to provide the county name, reel number, and the required page numbers when requesting full sized images.

If you would like a DVD of an entire county, please provide us with one DVD per county along with a self-addressed, stamped envelope.

Trohn Enright-Randolph
Monroe County Surveyor

TGN

RIW



Township N° IX North, Range N° I West of 2nd Meridian. Surveyed by William Harris 1816.

Description of the Soil on the interior Sectional lines.

Between Sections	Quality &c.	Between Sections	Quality &c.	Between Sections	Quality &c.
25.36	Sugar, Pine, good farming land	2.23	Land level & Poor - Much Timber	4.89	Land level & Poor - Much Timber, good farming land
25.36	Land Hilly, Oak, Birch, Gum, Poplar	33.34	Land first rate - Much Sugar, Walnut	4.5	ditto
25.36	Land very Hilly, Birch, Oak, Dogwood, Oak	27.34	ditto	31.32	Land 2 nd rate Oak &c.
26.25	Land Hilly, Oak, Oak, Beech, Middleling good farming land	27.28	ditto	29.32	good farming land
26.25	Land Hilly - Oak & Beech	26.27	Land very Hilly, Oak, Oak, Beech, Sugar	29.30	Land 1 st rate - Walnut, Birch, Oak, Sugar
13.24	Land Hilly - Oak, Oak, Beech, Poplar, Middleling good farming land	21.22	Land Hilly - Oak & Beech timber	20.29	Land first rate, Walnut, Much very heavy timber
13.14	very Hilly, poor land - Oak & Beech	15.22	Oak, Oak, Beech, Poplar, Middleling good farming land	19.20	good farming land, Walnut, Birch, Sugar
12.13	ditto	15.16	Land Hilly - Timber same - Sugar	17.20	ditto
11.12	ditto	10.15	Land very Hilly - Oak & Beech, Soil	17.13	ditto
1.12	ditto	9.10	Land that Hilly & Part Creek bottom, the bottom building good	8.17	Land first Hilly & part Hilly, good for farming
1.12	ditto	3.10	Land Hilly & Poor	7.8	Part bottom, Middleling, good for farming
26.35	First rate farming land - Birch, Sugar, Walnut &c.	3.4	Low wet bottom, Birch, Oak, rich Soil, rather thin	5.8	Eggs & land & ditto, Much Hilly & part bottom
26.35	Land rolling, 2 nd rate Soil	32.33	Land first rate, Walnut, Sugar, Birch, Oak &c.	5.6	Land Hilly, Middleling good Soil, Oak, Birch
26.27	Land Hilly, Middleling good farming land, Oak, Oak, Beech, Poplar	28.33	ditto	6.7	Land rolling, good Soil, Sugar, Poplar, Oak &c.
26.27	Land extremely Hilly, Oak, Oak, Beech, Sugar	28.29	ditto	7.18	good farming land
26.27	Land Hilly, Oak & Beech Timber	21.28	good farming land	18.19	Sugar, Birch, Sugar, Oak &c.
26.27	Hilly Poor land - Timber same	20.21	Land rolling, 2 nd rate Soil, Birch, Sugar &c.	19.20	good farming land, Middleling
	ditto	16.21	Part bottom land with good farming land, Oak & Beech	20.21	Land 2 nd rate, Oak &c.
	ditto	16.17	Bottom land rich & good for farming		
	ditto	9.16	Land Hilly Oak, Oak, Beech, Sugar, Poplar		
	ditto	8.9	Land 2 nd rate, Oak &c.		

South Boundary. Apr. 3. 1811

From the Survey post Kern. East on a Random line.
 Along the South Boundary of Town. 9 N. 1 W. 6 miles &
 full 4 ch. North of Boone. Corrected and marked
 as the true West.

Met On the South Boundary of sec. 34. T. 9 N. 1 W.

27.00 To a Brook 10 rods and, across N. E.

1.000 Set a 7/8 sap post from whiteny

W Oak 30 in diam. bears N 50 W. 28 rods dist. to

Beach 12 " " S 80 E 19 " "

80.00 Set a post for the corner of sec. 35 T. 9 N. 1 W. from whiteny

Beach 18 in diam. bears S 70 W. 24 rods dist. to

High 10 " " N 50 E. 7 " "

Found here and set, Timber Beach, &c.

Met On the South Boundary of sec. 35 T. 9 N. 1 W.

40.00 Set a 7/8 sap post from whiteny

Sugar 14 in diam. bears N 69 E 13 rods dist. to

Do 11 " " N 50 W. 21 " "

77.50 To a Brook 8 rods and, across N. E.

80.00 Set a post for the corner of sec. 34 T. 9 N. 1 W. from whiteny

Beach 12 in diam. bears S 38 W. 31 rods dist. to

Do 11 " " N 8 E. 17 " "

Found of timber same.

Met On the South Boundary of sec. 34. T. 9 N. 1 W.

40.00 Set a 7/8 sap post from whiteny

Sugar 14 in diam. bears N 66 W. 21 rods dist. to

Do 5 " " N 40 E. 22 " "

71.00 To a Brook 12 rods and, across N. W.

80.00 Set a post for the corner of sec. 33 T. 9 N. 1 W. from whiteny

Beach 5 in diam. bears N 39 W. 25 rods dist. to

Do. 6 " " N 48 E. 35 " "

I beg Mr. P. M. Good Mm. Ind.

Land and Fresh Water Lizards, Ash, &c,

West
40,00
Set a trap post from which,
Lugan. 14 in deer line. S 55 N. 46 W. 116
Ho. 10 4 " " N 69 E. 10 " "
54.00
Long Brook 50 W. in m. r., lower D.
43.50
" " Ho. 25 " " " S E.
80.00
Set a post for the end of line 32 & 33 from which,
Back 20 in deer line. N 22 E. 12 W. 116
Ho. 36 " " " S 31 N. 36 " "
Lugan same as last mile.

West On the South Bumast of eu. 31 L. 9 N. R. 1 W.
4000 Set a 1/4 cup of fine white
Sugar. 5 in diam. brass. 160 E. 10 in. dist. to
Ash. 14 " " " N 84 W. 18 " "
53.50 Toa Brook. 20 in. diam., leaves of E.
8000 Set a pot for the cu of eu 31 & 32 of fine white
Stick 14 in diam. brass. N 12 W. 20 in. dist. to
Buck 4 " " " 160 E. 19 " "
Sand 1st rate, Limbu Sugar, Ash Walnut, &c.

Meet Oak South Burn Mt of Ca, Fl. T. 9. N.R. 1 W.
 40,00 Set a pole post from Whiskey
 W Oak 16 a: deer: bear N 70 E 17 lms east; by
 Log road 3 a " " N 64 W 15 " "
 80,00 Moved the Temp Mt post 2 Ch! South to the camp
 T. 8 + 9. N.R. 1 + 2 from Whiskey
 4 Bend 13 in deer: Bear N 26 E 18 lms West; by
 W Oak 16 a " " N 46 W 32 " "
 Good clear land,

T. N. G. N. N. N. 1772nd Mrs. Julia

East Boundary April 1811 B127

North Outh 2nd Principal Mission, On the East Berney
of 2u. 36. 19 AR 11. From the ca of S^o 819 AB 1
E 17 W. Var. 6^o. 25' E.

3.75. Long Brook 15 mts wide, across D.C.
31.00 " " L.C. 12 " " " E.
40.00 A Brook 13 m wide stands further east of Jones farmstead,
" Brook 13 m wide here. S 80 E 24 mts wide, to
Hogmont 4 " " " S 75 W 36 " "
45.00 Long Brook. 14 m wide in the mts.
61.00 " " Brook 20 m wide, across E.
80.00 Set apart further east 25 to 36 from whiter,
Kick 10 m wide here S 60 W. 19 mts wide. to,
" Brook 36 " " " S 64 E 18 " "
Sand 1 1/2 m wide mudding good Brook (land? D.C.)
" m wide good Brook same.

North On the East Boundary of sec. 25 T9 N R 1 W.
 15,50 Iron Beach 10 mts wide, lower L.L.
 3,000 " " Sugar. 12 in dist in the mts.
 40,000 Let apart from whetzer
 Beach 13 in dist from Sh 6 E 11 mts dist; 10,
 100. 13 " " " Sp 5 W. 24 " "
 75,500 Iron Beach. 16 in dist in the mts.
 80,000 Let apart for the cu of sec 24 & 25. from whetzer
 Beach. 12 in dist from. N 49 W. 7 mts dist. 10,
 Ash 3 " " " Sp 6 E. 17 " "
 Sand of middling quality Iron Beach, Sugar,

North On the East Boundary of sec. 24 T9 N11 W.
26.00 To a Brook 10 links N. of corner S.E.
40.00 Set a post from vicinity
Back 18 in near corner N73 E. to the center of

T. No 9 N.R. No 1 W 2nd Mer. Ind.

Beck 13 in dist. from NW 1/4 N. 5 W. 5 mts east,
 57.00 To a Beck 16 in dist. in the line.
 80.00 Set a post for the cor. of sec. 13 & 24 from which,
 Sugar 5 in dist. from NW 1/4 E. 7 mts east, to
 No. 8 " " " S 57 N 14 " "
 Lands of middling quality Timber Beck, Sugar,
 Ash, Poplar,

North On the East Boundary of sec. 13. T. 9. N. R. 1 W.
 7.00 To a Beck 24 in dist. in the line.
 40.00 Set a post for the cor. from which,
 Sugar 16 in dist. from NW 1/4 E. 7 mts east, to
 Walnut 18 " " " S 22 W 29 " "
 71.50 To a Beck 12 mts. from corner N.W.
 71.50 " Beck 18 in dist. from corner in the line.
 80.00 Set a post for the cor. of sec. 12 & 13 from which,
 Sycamore 40 in dist. from NW 1/4 E. 25 mts east
 Sap Elm 5 " " " S 51 E. 25 " "
 Lands of timber same as last mtd.

North On the East Boundary of sec. 12. T. 9. N. R. 1 W.
 34.00 To a Oak 4 in dist. in the line.
 40.00 Set a post for the cor. from which,
 Sassafras 6 in dist. from NW 1/4 E. 5 mts east, to
 No. 3 " " " S 48 W 7 " "
 43.00 To a Beck 30 mts. from corner NW
 47.50 " Sugar 12 in dist. in the line
 80.00 Set a post for the cor. of sec. 12 & 13 from which,
 Beck 12 in dist. from NW 1/4 E. 15 mts east, to
 Hick 13 " " " S 32 E. 17 " "
 Poor Hilly Beck, Land. by James Holmes D.S.

North On the East Boundary of sec. 1. T. 9. N. R. 1 W.

T. No 9 N.R. No 1 W 2nd Mer. Ind.

7.00 To a Beck 20 in dist. in the line.
 16.75 Set out the N. Boundary line of Harris's Purchase
 and set a post for the cor. of sec. 1 & 6. T. 9. N. R. 1 W.
 1 E. 1 W from which,
 Beck 14 in dist. from East 32 mts east, to
 Elm 4 " " " West 30 " "
 Lands of timber same.

North On the East Boundary of sec. 1. T. 9. N. R. 1 W.

12.00 To a Beck 20 mts. from corner N.W.
 23.25 Set a post for the cor. from which,
 Hick 12 in dist. from NW 1/4 E. 17 mts east, to
 Dogwood " " " S 57 E. 8 " "
 63.25 Set a post for the cor. of sec. 16. 31 & 36 from which,
 Hick 9 in dist. from NW 1/4 E. 8 mts east, to
 Walnut 9 " " " S 50 E. 21 " "
 Land very broken middling good for farming.
 Timber Beck, Hick, Oak, Ash, Sugar, &c.
 May 20. 1819

North Boundary N. 60° 30' E.
 West On the South Boundary of sec. 36. T. 10. N. R. 1 W.
 40.00 Set a post for the cor.
 80.00 Set a post for the cor. of sec. 35 & 36
 91.00 Field 360 links South of the cor. on the Indian Boundary
 line or N. Boundary of Harris's Purchase. for the cor. of
 sec. 35 & 36.
 Lands middling good; Timber Beck, Sugar, Ash,
 Hick, Oak &c.

East On the line On the South Boundary of sec. 35.
 T. 10. N. R. 1 W. N. 60° 15'
 11.00 Set the post in the line for the cor. of sec. 35 & 36.
 from which, 13. Oak 18 in dist. from NW 1/4 E. 15 mts east
 and a Hick 9 " " " S 45 W 9 " "

T. N. 9. N. R. N. 17. 2nd Mer. Ind.

East On the line On the South Boundary of sec. 36.
T. 10 N. R. 1 W.
40.00 Set a 70 suppost from which,
Bassifras 9 in dia^r beam S 63 E. 20 links dist; 70,
Beck 12 " " S 80 W 6 " "
80.00 Set a post for the cor. of sec. 1. 6. 31 136 T. 9 N. R. 1 E. 1 W.
Surveyed by
William Harris 1881.

East On the South Boundary of sec. 31. T. 10 N. R. 1 W.
From the cor. of T. 9 N. R. 1 E. 1 W. April 5 1881.
23.00 To a Brook 10 links wide, corner N.
40.00 Set a 70 suppost from which,
Ash. 30 in dia^r beam North 15 links dist; 70,
Beck. 14 " " S 78 E. 27 " "
60.50 To a Brook 8 links wide, corner S. E.
80.00 Set a post for the cor. of sec. 31 132 from which
Sugar. 14 in. dia^r beam S 38 E. 5 links dist; 70,
Beck. 13 " " N 74 E. 28 " "
Land rich and hilly Timber Beech, Ash, & Buckeye

East On the South Boundary of sec. 32. T. 10 N. R. 1 W.
1.50 To a Brook 150 links wide, corner N. W.
5.00 " " Sec. 150 " " S. E.
11.00 " " Sec. 150 " " N. W.
40.00 Set a 70 suppost from which,
Beech 18 in dia^r beam S 61 W 16 links dist; 70,
Sec. 11 " " N 57 E 30 " "
80.00 Set a post for the cor. of sec. 32 133 from which,
Oak 14 in dia^r beam S 65 E. 27 links dist; 70,
Beech. 5 " " N 51 E. 23 " "
Land flat bottom covered with water; Timber
Elm, Maple, &c.

T. N. 9. N. R. N. 17. 2nd Mer. Ind.

East On the South Boundary of sec. 33 T. 10 N. R. 1 W.
10.00 To a Brook 6 links wide, corner S. E.
17.00 " " Sec. 10 " " N. W.
40.00 Set a 70 suppost from which,
Ash 20 in. dia^r beam S 81 W 16 links dist; 70,
Beech. 10 " " N 55 E 15 " "
80.00 Set a post for the cor. of sec. 33 134 from which,
Ash. 12 in. dia^r beam N 77 E 5 links dist; 70,
Beech. 18 " " N 48 W 19 " "
Land hilly Timber Oak; East 1/2 flat Elm, lot
from land.

East On the South Boundary of sec. 34 T. 10 N. R. 1 W.
40.00 Set a 70 suppost from which,
Gum. 30 in dia^r beam. N 40 E. 9 links dist; 70,
Beech. 10 " " N 49 W 9 " "
57.00 To a Brook. 150 links wide, corner S. W.
65.00 " " Sec. 150 " " N. W.
80.00 Set a post for the cor. of sec. 34 135 from which,
Beech. 12 in dia^r beam. N 50 W 34 links dist; 70,
Sec. 24 " " S 50 E. 28 " "
Land 1/2 mile long not Beech, Sand; 1/2 mile
flat bottom land.

East On the South Boundary of sec. 35 T. 10 N. R. 1 W.
8.50 To a Brook 40 links wide, corner S.
32.50 " " Sec. 150 " " N. W.
38.50 " " Sec. 8 " " N. W.
40.00 Set a 70 suppost from which,
Gum. 10 in dia^r beam S 46 W 6 links dist; 70,
Beech. 5 " " N 38 E 19 " "
59.00 Set a post in the Boundary line of Harris vs. Pinchaw
for the cor. of sec. 35 from which,

T. N. G. N. R. No 17th 2nd Mer. Ind.

Nick 14 in dia^r bears N 33 E. 14 links dist; do,
 Dogwood 4 " " S 20 W. 20 " "
 Sand & gravel mt. Buck bottom; do.

Surveyed by
 James Holmes Esq.

West Boundary. April 4. 1811. B 134

North On the East Boundary of sec. 36. T. 9. N. R. 2 W.
 40.00 Set a 7th sap post from which,
 Nick 10 in dia^r bears West 18 links dist; do,
 Maple 11 " " " N 63 E. 33 " "
 61.00 To a Oak 14 in dia^r in the line
 80.00 Set a post for the cor. of sec. 23 & 36. from which,
 Dogwood 4 in dia^r bears S 33 E. 32 links dist; do,
 Do 6 " " " N 33 W. 34 " "
 Sand & gravel. Timber Sugar, Oak, &c.

North On the East Boundary of sec. 25. T. 9. N. R. 2 W.
 38.00 To a Brook 10 links mid, corner S. E.
 40.00 Set a 7th sap post from which,
 Oak 14 in dia^r bears S 50 E. 18 links dist; do,
 Do 11 " " " N 79 W. 10 " "
 66.00 To a Nick 14 in dia^r in the line
 80.00 Set a post for the cor. of sec. 24 & 25 from which,
 Nick 12 in dia^r bears N 30 E. 20 links dist; do,
 Buck 12 " " " S 74 W. 26 " "
 Land same as last mile.

North On the East Boundary of sec. 24. T. 9. N. R. 2 W.
 22.50 To a Brook 12 links mid, corner S. E.
 40.00 Set a 7th sap post from which,
 Maple 14 in dia^r bears N 10 E. 29 links dist; do,
 Poplar 25 " " " S 75 W. 10 " "

T. N. G. N. R. No 17th 2nd Mer. Ind.

69.50 To a Walnut 13 in dia^r stands in the line.
 80.00 Set a post for the cor. of sec. 13 & 24 from which,
 Oak 18 in dia^r bears N 46 W. 20 links dist; do,
 Dogwood 4 " " " S 39 W. 12 " "
 Land & timber same as last mile.

North On the East Boundary of sec. 13. T. 9. N. R. 2 W.
 23.50 To a Nick 18 in dia^r in the line.
 40.00 Set a 7th sap post from which,
 Dogwood 10 in dia^r bears N 38 W. 34 links dist; do,
 Dog 13 " " " S 38 E. 21 " "
 67.00 To a Brook 12 links mid, corner S. E.
 73.50 " " 20 " 8 " " " S. E.
 80.00 Set a post for the cor. of sec. 12 & 13 from which,
 Nick 12 in dia^r bears S 37 W. 3 links dist; do,
 Do 10 " " " S 68 E. 10 " "
 Land & timber same. on the N. W. 1/4 mile. 2nd 1/2 mile.
 Land of middling quality

North On the East Boundary of sec. 12. T. 9. N. R. 2 W.
 32.50 To an Ash 30 in dia^r in the line.
 40.00 Set a 7th sap post from which,
 Dogwood 12 in dia^r bears N 47 W. 9 links dist; do,
 Butternut 18 " " " S 57 E. 31 " "
 43.50 To a Brook 12 links mid, corner S. E.
 53.50 " " Poplar 20 in dia^r stands in the line.
 80.00 Set a post for the cor. of sec. 11 & 12 from which,
 Buck 13 in dia^r bears N 29 E. 31 links dist; do,
 Elm 12 " " " N 60 W. 40 " "
 Land & timber same as last mile.

North On the East Boundary of sec. 1. T. 9. N. R. 2 W.
 34.75 To a Pine S 53 W.

T. N. 9. N. R. No 1 W. D. M. S. Ind.

40.00 Set a 1/2 sup post from which
Sugar 17 in. diam. bears S 8 E. 36 links dist; to
No. 14 " " " N 19 W 31 " "
54.00 To a Sugar 16 in. diam. in the line.
80.00 Set a post for the cor. of S. 9 & 10. N. R. 1 & 2 W. from
which, Buck 5 in. diam. bears N 6 W. 13 links dist; to
No. 12 " " " N 24 E. 28 " "
Good land Timber Sugar, Buck, Poplar,
Surveyed by James Holmes 10.1

Subdivisions Sept. 22. 1815.

North Return Sur. 35 & 36. T. 9. N. R. 1 W.
40.00 Set a 1/2 sup post from which,
Blue Ash 3 in. diam. bears S 62 W. 29 links dist; to
Sugar. 18 " " " N 28 E. 28 " "
42.50 To a small Spring branch Corner S. W.
78.50 To a small Brook Corner W.
80.00 Set a post for the cor. of Sur. 25, 26, 35 & 36. from which
Buck 16 in. diam. bears S 71 E. 16 links dist; to
Buck 12 " " " N 8 W. 12 " "
Land good for farming; Timber Ash, Buck, Sugar
Sycamore.

East On a Ranam line between Sur. 25 & 36. T. 9. N. R. 1 W.
40.00 Set a temp. 1/2 sup post.
64.50 To a Brook 8 links wide, Corner S. W.
80.78 Intersect the A. R. line on East Boundary 58 links North
of the post cor. of Sur. 25 & 36. Good hill, Timber Oak,
Hick, Buck, Elm, Poplar.

West On the same line between Sur. 25 & 36. T. 9. N. R. 1 W.
40.39 Set the temp. 1/2 sup post at the ar. dist. on the same line
from which, Sugar 16 in. diam. bears S 22 W. 16 links dist;

T. N. 9. N. R. No 1 W. D. M. S. Ind.

80.78 Buck 20 in. diam. bears N 9 E. 30 links dist;
To the post cor. of Sur. 25, 26, 35 & 36.

North Return Sur. 35 & 36. T. 9. N. R. 1 W.
40.00 Set a 1/2 sup post from which,
10 in. diam. bears S 21 W. 16 links dist; to
Buck 11 " " " N 30 W. 20 " "
75.00 To a small brook corner W.
80.00 Set a post for the cor. of Sur. 23, 24, 25 & 26. from which,
Buck 10 in. diam. bears N 62 W. 13 links dist; to
No. 16 " " " N 41 E. 10 " "
Land very hilly, Timber Buck, Ash, Oak, & Dogwood.

East On a Ranam line between Sur. 24 & 25. T. 9. N. R. 1 W.
40.00 Set a temp. 1/2 sup post.
80.24 Intersect the East Boundary 9 links North of the post cor.
of Sur. 24 & 25. Good hill, land maddening good for
farming Timber Oak, Ash, & Buck.

West On the same line between Sur. 24 & 25. T. 9. N. R. 1 W.
40.12 Set the temp. 1/2 sup post at the ar. dist. on the same line.
from which, Buck 30 in. diam. bears S 7 E. 21 links dist;
and a No. 24 " " " N 21 E. 35 " "
80.24 To the post cor. of Sur. 23, 24 & 25 & 26.

North Return Sur. 23 & 24. T. 9. N. R. 1 W.
40.00 Set a 1/2 sup post from which,
Dogwood 3 in. diam. bears S 39 W. 24 links dist; to
Buck 20 " " " N 65 E. 21 " "
78.50 To a brook 50 links wide, Corner S. W.
80.00 Set a post for the cor. of Sur. 13, 14, 23 & 24 from which,
Walnut 3 in. diam. bears N 80 W. 11 links dist; to
Sugar 14 " " " N 88 E. 21 " "

East On a Random line between Sec. 13 & 24 T. 9. N. R. 17. W.
 40.00 Set a trap for a few feet
 80.25 Intercept the East Boundary 11 miles South of the post on
 of sec. 13 & 24. Land is hilly and middle good for farming
 in g. Timber Oak, Ash, Beech, & Poplar.

West On the same line between Sec. 13 & 24 T. 9. N. R. 17. W.
 40.12 1/2 Set the trap for a few feet at the ar. dist. on the true line
 from which in ar. 24 in ar. have N 36 W. 5 miles dist.
 and a Sugar 3 " " " N 67 W. 21 " "
 80.25 To the post on of sec. 13, 14, 23 & 24

North Return Sec. 13 & 24 T. 9. N. R. 17. W.
 40.00 Set a trap for a few feet from which,
 Sugar 10 in ar. have N 21 W. 7 miles dist. Sugar
 Ironwood 4 " " " N 21 W. 11 " "
 80.00 Set a post for the cor. of sec. 11, 12, 13 & 24 from which,
 N Oak 3 in ar. have S 12 E. 21 miles dist. Beech,
 No 6 " " " N 37 W. 8 " "
 Land is very hilly and poor, Timber Oak & Beech.

East On a Random line between Sec. 12 & 13 T. 9. N. R. 17. W.
 40.00 Set a trap for a few feet
 70.00 To a small Spring branch, Corner N.
 1/980 " " " " " " " " " " " "
 80.20 Intercept the East Boundary 20 miles North of the post
 on of sec. 12 & 13. Land is extremely hilly & broken
 Timber Oak & Beech. Generally poor soil.

West On the same line between Sec. 12 & 13 T. 9. N. R. 17. W.
 40.00 Set the trap for a few feet at the ar. dist. on the true line
 from which, Dogwood 3 in ar. have N 57 W. 11 1/2 miles dist.
 and a Hick 17 " " " " " " " " " "

50.20 To the post on of sec. 11, 12, 13 & 24.

South On a Random line between Sec. 11 & 20 T. 9. N. R. 17. W.
 21.50 To a creek 50 miles mid. Corner N.
 40.00 Set a trap for a few feet
 80.33 Intercept the E. & W. line 25 miles East of the post on of sec.
 11, 12, 13 & 24. Land is hilly and poor, Timber Oak & Beech.

North On the same line between Sec. 11 & 20 T. 9. N. R. 17. W.
 40.16 1/2 Set the trap for a few feet at the ar. dist. on the true line.
 from which, Dogwood 6 in ar. have N 88 W. 12 miles dist.
 and a No 5 " " " " " " " " " "
 80.33 To the post on of sec. 1, 2, 11 & 20.

East On a Random line between Sec. 1 & 20 T. 9. N. R. 17. W.
 40.00 Set a trap for a few feet
 80.13 Intercept the East Boundary 156 miles North of the post.
 on of sec. 1 & 20. Land is extremely hilly & broken,
 Soil poor Timber Beech, & Oak.

West On the same line between Sec. 1 & 20 T. 9. N. R. 17. W.
 40.01 1/2 Set the trap for a few feet at the ar. dist. on the true line
 from which, Hick 17 in ar. have S 61 W. 28 miles dist.
 and a Beech 16 " " " " " " " " " "
 80.03 To the post on of sec. 1, 2, 11 & 20.

North Return Sec. 1 & 20 T. 9. N. R. 17. W.
 25.00 To a small creek. Corner N. W.
 40.00 Set a trap for a few feet from which,
 Beech 4 in ar. have S 52 W. 11 miles dist. Oak,
 N Oak 10 " " " " " " " " " "
 72.28 Intercept the Boundary line of Harrison's Purchase & set a post
 for the cor. of sec. 1 & 20 from which,

Beck 18 in air. hars. N 127.10 links west; 12
 No. 17. " " N 127.16 " "
 80.50 Intersect N. Boundary 811. E. of post, set post cor. of 1 & 2 from
 which Runway 26. 142. 71. 13 & a 2nd Runway 4. 125. 6. 19
 Broken State land, Beech, Sugar, Hickory &c.

Sept 22. 1815.
 North Return Sur 34 135. T. G. N. R. 177.
 40.00 Set a 7/8 suppost from which,
 Sugar 18 in air. hars. S 21 E. 5 links west; 12
 Beck 30 " " S 36 W. 27 " "
 80.00 Set a post for the cor. of Sur 26, 27, 34 135 from which,
 Beck 8 in air. hars. S 30 W. 7 links west; 12
 Sugar 4 " " N 26 E. 10 " "
 Same rate for farming Timber, Sugar &
 Walnut.

East On a Random line between Sur. 26 135. T. G. N. R. 177
 25.00 To a small brook corner N
 39.00 " " No. 15 links mid, corner N
 40.00 Set a 7/8 suppost
 80.66 Intersect the N 13 line 36 links North of the post cor. of
 Sur. 25, 26 35 136. Same rolling & 2nd rate.

West On the true line between Sur. 26 135. T. G. N. R. 177.
 40.33 Set the 7/8 suppost at the av. dist. on the true line
 from which, Sugar 8 in air. hars. N 7 E. 12 links west;
 and a No. 20 " " S 61 W. 22 " "
 80.66 To the post cor. of Sur. 26, 27, 34 135.

South On a Random line between Sur. 26 135. T. G. N. R. 177.
 4.50 To a brook 50 links mid, corner N.W.
 40.00 Set a 7/8 suppost.
 59.50 To a small brook corner E.
 80.10 Intersect the East 131 line 120 links West of the post

Cor. of Sur. 26, 27, 34 135. Land chiefly, and middling good
 for farming Timber Oak, Ash, Beech, & Poplar.

North On the true line between Sur. 26 & 27. T. G. N. R. 177.
 40.05 Set a 7/8 suppost at the av. dist. on the true line from
 which, 13 No in air. hars. N 4 E. 21 links west;
 and a Beck 9 " " N 31 E. 27 " "
 80.10 To the post cor. of Sur. 22, 23, 26 127.

West On a Random line between Sur. 23 & 26. T. G. N. R. 177.
 12.50 To a brook 40 links mid, corner N.W.
 40.00 Set a 7/8 suppost.
 81.05 Intersect the N 13 line 505 links South of the post cor. of
 Sur. 22, 23, 26 127.

West On the true line between Sur. 23 & 26. T. G. N. R. 177.
 40.53 Set the 7/8 suppost at the av. dist. on the true line from
 which, 7 Oak 11 in air. hars. N 34 E. 3 links west; 12
 Ash, 30 " " N 10 E. 15 " "
 81.05 To the post cor. of Sur. 22, 23, 26 127.
 Same extremely hilly. Timber Oak, Ash, Beech, Sugar.

South On a Random line between Sur. 22 & 23. T. G. N. R. 177.
 40.00 Set a 7/8 suppost.
 45.00 To a brook 50 links mid, corner S.W.
 72.50 " " No. 60 " " N.
 79.82 Intersect the E 77 line 41 links East of the post cor. of
 22, 23, 26 127. Same very hilly, & Broken, Timber Oak,
 & Beech generally.

North On the true line between Sur. 23 & 26. T. G. N. R. 177.
 39.91 Set the 7/8 suppost at the av. dist. on the true line from
 which, 13 No in air. hars. N 5 E. 16 links west; 12

1982 Sugar 15 in diam. bears. N35 E 6 km dist;
To the post car of sec 14 15, 22 & 23.

West On a Random line between Sec 14 & 23. T. N. G. N. R. 177.

40,00 Set a temp. 7/4 suppost.

1985 Intersect the N 55 line. 33 km South of the post car of
Sec 14 15, 22 & 23. Same as the same.

East On the same line between Sec 14 & 23. T. N. G. N. R. 177.

39927 Set the temp. 7/4 suppost on the line at the ax dist from
whit, Sassafras 4 in diam. bears. N34 E 6 km dist;
and a Do. 5 " " " N41 E 6 " "

1985 To the post car of sec 13 14 23 & 24

South On a Random line between Sec 14 & 23. T. N. G. N. R. 177.

40,00 Set a temp. 7/4 suppost.

80,29 Intersect the E 77 line at the post car of sec 14 15, 22 & 23.
Same as the same. Timber Oak & Birch.

North On the same line between Sec 14 & 23. T. N. G. N. R. 177.

40,147 Set the temp. 7/4 suppost at the ax dist on the line
from whit, Dogwood 3 in diam. bears. West 26 km dist;
and a Birch 18 " " " N24 E 21 " "

80,29 To the post car of sec 10 11 14 & 15. Sept. 29, 1815

East On a Random line between Sec 11 & 14. T. N. G. N. R. 177.

22,00 To a Brook 20 km mid, Corner N.

39,50 To a small creek Corner N. W.

40,00 Set a temp. 7/4 suppost.

80,25 Intersect the N 55 line 26 km North of the post car
of sec 11 12, 13 & 14 Same as the same.

West On the same line between Sec 11 & 14. T. N. G. N. R. 177.

40,127 Set the temp. 7/4 suppost at the ax dist on the line
from whit, Elm 4 in diam. bears. N40 E 18 km dist;
and a Birch 5 " " " N67 W 33 " "

80,25 To the post car of sec 10 11 14 & 15.

North Between Sec 10 & 11. T. N. G. N. R. 177.

22,50 To a Brook 50 km mid, Corner N.

40,00 Set a 7/4 suppost from whit,

Birch 16 in diam. bears. N19 W 27 km dist; or,

N3. 10 " " " N38 W 6 " "

80,00 Set a post for the car of sec 2, 3, 10 & 11 from whit,
W Walnut, 9 in diam. bears. S50 E 27 km dist; or,
Box Elder, 3 " " " S85 W 36 " "

Same as the same. Timber Oak & Birch generally.

Sept. 30, 1815.

East Between Sec 9 & 11. T. N. G. N. R. 177.

31,50 To a Brook 50 km mid, Corner N. W.

40,00 Set a 7/4 suppost from whit,

Birch 15 in diam. bears. N17 E 16 km dist; or,

Sugar 8 " " " S9 E 20 " "

80,00 Set a post for the car of sec 1, 2, 11 & 12 from whit,
Birch 6 in diam. bears. South 10 km dist; or,
Nick 7 " " " N41 W 17 " "

Same as the same.

North Between Sec 3 & 3. T. N. G. N. R. 177.

1,00 To a Brook 30 km mid, Corner N. W.

24,00 " " Do. 40 " " " W.

40,00 Set a 7/4 suppost from whit,

Maple 13 in diam. bears. N43 W 26 km dist; or,

Do 11 " " " N36 E 9 " "

1947 Intersect the N 60 line 87 km West of the post car.

	<p>Set 34 B5. I 10 N R 1 W and set apart for the car of Set 213 from which, Buck 6 in dia. beam. N 74 E. 20 links dist; 70, No. 19 " " " N 44 W. 20 " " " Same as here and from. Timber Buck, Oak, &c.</p>
South	On a Random line between Set 33 B4 I 9 N R 1 W.
40.00	Set a tripit for support.
63.00	To a Bore corner W.
70.00	" " " " " "
80.50	Enter cut the South Boundary 16 links East of the first cut of Set 33 B4 Same as the same.
North	On the true line between Set 33 B4 I 9 N R 1 W.
40.26	Set the tripit for support at the ar. dist. on the true line from which, Nick 10 in dia. beam. S 29 W. 22 links dist; 70, Sugar 20 " " " N 18 E. 23 " " "
80.50	To the post on of Set 27 28 33 B4
West	Return Set 27 B4 I 9 N R 1 W.
40.00	Set a 74 support from which, Sugar 16 in dia. beam. N 74 W. 21 links dist; 70, No. 10 " " " S 23 W. 14 " " "
80.00	Set a post for the car of Set 27 28 33 B4 from which, Buck 24 in dia. beam. S 86 E. 8 links dist; 70, No. 24 " " " S 42 W. 20 " " " Same as set rate; Timber Buck, Sugar, & Walnut, &c.
North	Return Set 27 B28 I 9 N R 1 W.
40.00	Set a 74 support from which, Sugar 16 in dia. beam. N 84 W. 16 links dist; 70, Buck 6 " " " N 86 E. 18 " " "
80.00	Set a post for the car of Set 21 22 27 B28 from which,

	<p>Buck 5 in dia. beam. N 44 W. 3 links dist; 70, Sugar 8 " " " S 37 E. 27 " " " Same as set rate.</p>
East	Return Set 22 B27 I 9 N R 1 W. Sept. 23 rd 1815.
40.00	Set a 74 support from which, Nick 6 in dia. beam. N 54 E. 2 links dist; 70, Buck 6 " " " S 46 W. 2 " " "
73.00	To a plank 50 links wide, corner W. W.
80.00	Set a post for the car of Set 22, 23, 26 & 27 from which, W Oak 16 in dia. beam. S 42 E. 3 1/2 links dist; 70, B Oak 4 " " " N 25 W. 35 " " " Same as very hills, & Borken. Timber Oak, Ash, Buck, Sugar,
North	Return Set 21 B22 I 9 N R 1 W. Sept. 24 1814
36.00	To a plank 70 links wide, corner W.
40.00	Set a 74 support from which, Buck 14 in dia. beam. N 81 E. 16 links dist; 70, No. 6 " " " N 47 W. 21 " " "
80.00	Set a post for the car of Set 15 16 21 B22 from which, W Oak 14 in dia. beam. S 59 W. 27 links dist; 70, Maple 11 " " " N 73 E. 18 " " " Same as the same.
East	Return Set 15 B22 I 9 N R 1 W.
98.00	To a small Buck. Corner S.
40.00	Set a 74 support from which, Poplar 40 in dia. beam. N 85 W. 16 links dist; 70, Buck 16 " " " S 4 E. 21 " " "
80.00	Set a post for the car of Set 14 15 22 & 23 from which, Dogwood 3 in dia. beam. S 71 W. 22 links dist; 70, Buck 10 " " " N 41 E. 18 " " "

Sand hilly and middle Good for farming.
 Timber Oak, Ash, Beech, Poplar, &c.

North Return Jul 15th T. N. G. N. R. 177.
 4000 Set a 7/4 cuppost from which, Sept. 25, 1815,
 Beech 4 in diam. from N 69 W. 9 links dist; &c.
 No. 6 " " N 37 E 10 " "
 7000 To a small Brook Corner W.
 8000 Set a post for the cor. of sec. 9. 10. 15 N 6 from which,
 Beech 20 in diam. from N 7 W. 13 links dist; &c.
 No. 18 " " N 28 E 10 " "
 Sand hilly Timber Beech, Ash, Poplar, Walnut,
 Sand middle for farming.

East On a Random line between Jul 10 & 15 T. N. G. N. R. 177.
 4000 Set a 7/4 cuppost from which,
 Dogwood 5 in diam. from S 17 W. 6 links dist; &c.
 No. 5 " " N 48 W E 22 " "
 8000 Set a post for the cor. of sec. 10. 11. 14 & 15 from which,
 Hick 16 in diam. from S 6 W. 29 links dist; &c.
 Asp. 10 " " N 31 E 15 " "
 Sand very hilly Soil rather thin. Timber Oak & Beech,

North Return Jul 9th T. N. G. N. R. 177.
 4000 To a Brook 30 links from, Corner W.
 4000 Set a 7/4 cuppost from which,
 Beech 10 in diam. from S 17 E. 23 links dist; &c.
 Poplar 4 " " N 32 W. 18 " "
 8000 Set a post for the cor. of sec. 3. 4. 9 & 10 from which,
 Sugar 12 in diam. from S 40 E. 3 links dist; &c.
 Beech 12 " " N 43 W. 22 " "
 Sand part hilly and part level bottom. The bottom
 middle for farming.

West Return Jul 3rd T. N. G. N. R. 177. On the line,
 3988 Set the trip. 7/4 cuppost at the ar. dist on the line from
 which, Beech 14 in diam. from N 5 E. 35 links dist; &c.
 No. 14 " " N 37 W. 26 " "
 7976 To the post on of sec. 3. 4. 9 & 10.

East On a Random line between Jul 3rd T. N. G. N. R. 177.
 4000 Set a trip. 7/4 cuppost.
 7920 To a creek 30 links from, Corner S.
 7976 Intersect the N 13 line. 51 links North of the post, cor. of
 Sec. 2, 3, 10 & 11. Sand hilly & poor,

North Return Jul 3rd T. N. G. N. R. 177.
 1714 To a creek 100 links from, Corner W.
 4000 Set a 7/4 cuppost from which; A Buckeye sapling,
 3 in diam. It was further cor. of 7/4 sec.
 7673 Intersect the N 13 line 769 links West of the post on of sec.
 33 & 34 T. N. G. N. R. 177. and set a post further cor. of
 3 & 4 from which,
 Beech 4 in diam. from N 42 W. 22 links dist; &c.
 B. 16 " " N 66 E. 17 " "
 Sand not bottom, rich soil. Timber Oak & Beech,

South On a Random line between Jul 32 & 33 T. N. G. N. R. 177.
 4000 Set a trip. 7/4 cuppost.
 5350 To a Brook 10 links from, Corner S.E.
 8010 Intersect the S 17 line 146 links East of the post cor. of
 Sec. 32 & 33. Sand & water; Timber Walnut, Sugar, Beech,
 Ash &c.

North Return Jul 32 & 33 T. N. G. N. R. 177.
 4006 Set the trip. 7/4 cuppost at the ar. dist on the line from
 which, Beech 30 in diam. from N 6 W. 5 links dist;

J. N. G. N. R. No 177 D. and New. Ind.

80.10	and a 9 Bech. 18 in dia. beam N 3 E. 24 the dist To the post on of 28.29.32 133.
West	Return Jul 29 132 J. N. R. 177.
11.00	To a Brook 10 links wide, Corner N. E.
35.00	" " No. 15 " " " "
40.00	Set a 70 support from which, Bech. 30 in dia. beam N 60 W. 16 links dist. 70, No. 4 " " " N 60 E. 9 " "
80.00	Set a post for the corner of 29.30.31 133 from which, Dogwood 5 in dia. beam N 7 W. 10 the dist. 70, No. 4 " " " N 15 E. 15 " " Good farming land.
West	Return Jul 28 133 J. N. R. 177
40.00	Set a 70 support from which, Sugar 10 in dia. beam N 3 W. 25 links dist. 70, No. 24 " " " N 6 E. 22 " "
62.50	To a Brook Corner N.
80.00	Set a post for the corner of 28.29.32 133 from which, Sugar 6 in dia. beam N 40 W. 20 links dist. 70, No. 18 " " " N 70 E. 32 " " Land R. rate Timber Sugar Bech, Ash.
South	On a Random line between Jul 28 129 J. N. R. 177
40.00	Set a trip. 70 support Sept. 24 1816.
43.00	To a Brook 10 links wide, Corner N. E.
55.50	" " No. 10 " " " N. E.
80.30	Intersect the East 8 West line 62 links East of the post on of 28.29.32 133 Land R. rate Timber Sugar Walnut, Bech, Ash.
North	Return Jul 28 129 J. N. R. 177 New line Camp?

J. N. G. N. R. No 177 D. and New. Ind.

40.15	Set the trip. 70 support at the cor. dist on the new line from which, Bech. 6 in dia. beam N 3 E. 8 links dist. and a No. 8 " " " N 42 W. 26 " "
80.30	To the post on of 20.21.28 129
West	On the New line between Jul 21 128 J. N. R. 177.
39.36	Set the trip. 70 support at the cor. dist on the new line from which, Ash. 40 in dia. beam N 22 W. 11 the dist. and a Ash 36 " " " N 4 E. 13 " "
78.73	To the post on of 20.21.28 129
East	On a Random line between Jul 21 128 J. N. R. 177.
1.01	To a small Brook Corner N. E.
20.00	To a Brook 30 links wide Corner N.
40.00	Set a trip. 70 support.
68.00	To a Brook 10 links wide, Corner N.
78.73	Intersect the N 13 line 21 links North of the post on. of 21.22.27 128. Good farming land.
North	Return Jul 20 129 J. N. R. 177.
40.00	Set a 70 support from which, Ash. 24 in dia. beam N 22 W. 6 links dist. 70, No. 24 " " " N 8 E. 20 " "
57.50	To a Brook 15 links wide, Corner N.
80.00	Set a post for the corner of 16.17.20 129 from which, Sugar 12 in dia. beam N 44 W. 5 links dist. 70, Bech. 18 " " " N 43 E. 18 " " Land R. rate Timber Sugar Bech, Sugar, Ash.
East	On a Random line between Jul 16 124 J. N. R. 177
21.00	To a Brook 20 links wide, Corner N. W.
40.00	Set a trip. 70 support.
80.08	Intersect the N 13 line 81 links North of the post on.

I N.º 9. A R. N.º 17.º de Mar. Ind.ª

13. 16. 21 + 22. Seeds on the West & Sonne; last & Hilley & prov.

West
 40.04
 80.08
 On the same line between Dec 16 & 21. 1907 178.
 Set the transport in support at the air dist. on the same line
 from which, 9 Dec. 10 in air. from. 162719 the air
 made a R Oak. 36 4 4 2 145 to 19 1 3
 To the post on of Dec. 16, 17, 20 & 21.

South Quanquam line between Jul 16 & 17 T9 N R R W.
350 To about 60 mds under corner N.W.
4400 " " No. 60 " " " N.E.
20.00 To " No. 60 " " " " W.
40.00 Set a trap for foxes.
79.00 Put out the East & West line 15 miles West of the
Foot cr of ear 16, 17, 20 & 21.
Sands rich and good for farming.

North Oak the time between Dec 16 1774 & 19 APR 1775.
39.50 Let the transport support at the ardist on the time line
from which, N Oak 12 in dia: brass \$317.8 lbs. with
and a Hackberry to " " " N 74 E. 269 "
19.00 To the post on of cul. 8.9.16 & 17.

South
 30.00 On a Roman line between Jul. 8 & 9. 49. 50 R 17
 4000 To a creek 100 miles wide, Course W.
 63.00 Set a trap line to support
 80.25 To a River 10 miles wide; Course W
 Intercept the East & West line 13 miles West of the first
 ca of Jul. 8. 9. 16 47. Some part level & part hilly
 3. rate.

I. A. 9. RR. A. 17 2nd Mn. Ind. ²⁸³

North South Line between Sept. 8 & 9. 19. 11. 11.
40.12 Let the transport pass at the arrival on the line
from which, Bent. 18 in air. from N. 5/11. 24 the air
made a Wash. 18 " " 24 E. 29 " "
80.25 To the post ca of Dec. 45. 8 & 9.

Met Return Sat. 489. T 9. NR. 17.
33.50 To a break 101 mts. wide, corner N.E.
40.00 Set a trap post from which,
Beck 10 in deer bears N 27 W. 10 mts. dist. on
Do. 12 " " " S 15 W 9 " "
80.00 Set a post for the cor. of sec. 4. 51. 889 from which,
Beck 14 in deer bears N 31 W. 17 mts. dist. on
Do 14 " " " S 41 E. 13 " "
Sand level 8 mts; not very good for farming
Timber Beech, Hickory, Gum, Oak &c.

North Butteview Gul 485 T. 9. N. R. 17.
4900 Set a 7/4 Bu post from which,
Beck. 12 in dia: bears West 6 lks. dist: on,
Kick 18 " " " N 68 E. 28 " "
7868 Intersect the N. B. R. M. 7 818 birds West of the post
crossed at 32133. T. 10 N. R. 17 and set a post for
" " " 483 from which,
Oak 18 in dia: bears N 50 E. 14 lks. dist: on,
Beck. 18 " " " S 33 W 9 " "
Sand land and mt; Timber Buck, Gum, Oak,
Not very good for farming

South	On Random line between Cul. 31 & 32. Tg. 1181 W.
40.00	Set a trap for $\frac{1}{4}$ bushel
79.86	Entered at the South Boundary 56 miles West of the port on of cul. 31 & 32. Found 2 nd rate Timber Oak.

I. N. G. N. R. N. 1 W. 2nd. Mrs. Ind.

39.41	Set the tripst 1/2 suppost at the car dist on the line from which, Sugar 3 in dist. bears S 2 E. 3 the dist. and a Do. 24 " " N 63 E. 12 " "
79.83	Set the post on of ew. 17. 18. 19 & 20
West	Return Jul 17/18 I. G. N. R. 1 W.
40.00	Set a 1/2 suppost from which, Beck 18 in dist. bears S 44 E. 3 links dist; to, Do 4 " " " N 15 E. 16 " "
78.50	To a post 30 links mid, corner N.
80.00	Set a post for the car of ew. 17. 18. 19 & 20 from which, Nackberry 36 in dist. bears N 64 E. 11 the dist; to, Sugar 14 " " " S 31 E. 25 " " Land good for farming; Timber Walnut Sugar Beck &c.
West	Return Jul 18/19 I. G. N. R. 1 W.
40.00	Set a 1/2 suppost from which, Beck 18 in dist. bears N 24 W. 3 links dist; to, Sugar 9 " " " S 32 W. 39 " "
72.39	Set a post on the West Roman 186 links North of the post car of ew. 13 & 24 I. G. N. R. 2 W. and set a post for the " " " 18/19 from which, Nicky 12 in dist. bears N 24 E. 11 the dist; to, Do 12 " " " S 8 W. 16 " " Land the same. Timber Beck, Sugar, Poplar & Oak.
North	Return Jul 17/18 I. G. N. R. 1 W. Iron line
40.00	Set a 1/2 suppost from which, Sugar in dist. bears S 51 E. 14 links dist; to, Do 11 " " " N 4 E. 20 " "
80.21	Set the post on of ew. 7. 8. 17 & 18.

I. N. G. N. R. N. 1 W. 2nd. Mrs. Ind.

South	On a Roman line between Jul 17/18. I. G. N. R. 1 W.
40.00	Set a tripst 1/2 suppost.
80.21	Set a post on the E W line 122 links East of the post car of ew. 17. 18. 19 & 20. Land the same.
West	Return Jul 8/17 I. G. N. R. 1 W.
40.00	Set a 1/2 suppost from which, Beck 8 in dist. bears N 52 W. 22 links dist; to, Do 30 " " " S 4 E. 10 " "
75.50	To a post 15 links mid, corner N.
80.00	Set a post for the car of Jul 7. 8. 17 & 18 from which, Beck 10 in dist. bears N 13 W. 18 links dist; to, Do 30 " " " S 6 E. 16 " " Land post hill, Spout land; Good for farming Timber Beck, Sugar, & Poplar.
West	Return Jul 7/18 I. G. N. R. 1 W.
40.00	Set a 1/2 suppost from which, Oak 12 in dist. bears N 41 E. 5 the dist; to, Dogwood 9 " " " N 41 E. 13 " "
72.90	Set a post on the West Roman 150 links North of the post car of ew. 12 & 13. I. G. N. R. 2 W. and set a post for the " " " 17/18 from which, Poplar 4 in dist. bears S 3 E. 6 links dist; to, Dogwood 6 " " " N 2 E. 16 " " Land good for farming.
South	On a Roman line between Jul 7/18 I. G. N. R. 1 W.
40.00	Set a tripst 1/2 suppost
80.50	Set a post on the E W line 4 links East of the post car of Jul 7. 8. 17 & 18. Land post bottom & meadow, good for farming

T. N. 9. N. R. N. 177 2nd Mer. Ind.

North On the line between Sec. 7 & 8 T. 9. N. R. 177
 40.28 Set the corner post at the air well on the line
 from which
 Bech 11 in air line. N 80 E. 13 lbs. dist. to
 Sugar 9 " " S 29 W. 26 " "
 80.56 Set the post on gear 5, 6, 7 & 8.

West Return Sec 5 & 8. T. 9. N. R. 177.
 40.00 Set a 7th corner post from which
 B. Oak 12 in air line. S 28 E. 6 lbs. dist. to
 Maple 10 " " N 64 W. 30 " "
 45.00 To a Brook 100 yds. wide, corner N
 65.00 " " Do. " 20 " " " " " "
 80.00 Set apart from the corner 5, 6, 7 & 8 from which
 Bech 20 in air line. N 28 E. 17 lbs. dist. to
 Do. 11 " " S 54 W. 16 " "
 Land East of corner. West part still, & part
 creek bottom, Timber Bech &c.

West Return Sec 6 & 7. T. 9. N. R. 177
 39.00 To a Spring Branch Co. S. E.
 40.00 Set a 7th corner post from which
 Bech 7 in air line. N 63 E. 17 lbs. dist. to
 Do. 20 " " S 21 W. 12 " "
 72.89 Intersect the West Branch 100 yds. North of the
 post on gear 5 & 6 T. 9. N. R. 177. and set apart
 from which
 Sugar 12 in air line. S 49 E. 18 lbs. dist. to
 Do. 20 " " S 62 W. 30 " "
 Land rolling Timber Bech, Sugar, Poplar,
 Ash Walnut, & good land for farming.

Oct. 2nd 1815.T. N. 9. N. R. N. 177 2nd Mer. Ind.

North Return Sec 5 & 6. T. 9. N. R. 177.
 40.00 Set a 7th corner post from which
 Bech 30 in air line. N 45 W. 16 lbs. dist. to
 Do. 24 " " S 10 E. 40 " "
 78.88 Intersect the N. Branch 720 yds. West of the post
 on gear 3 & 4 T. 9. N. R. 177 and set apart from
 " " " 5 lbs. from which
 Bech 5 in air line. N 16 E. 23 lbs. dist. to
 Elm 20 " " S 18 E. 19 " "
 Land hilly and soil muddling; Timber Oak, Ash,
 Bech, & Poplar.

Surveyed by
 William Harris.
 Sept. 1815.

West Return Sec. 9 & 16 var. 5.50 E.
 40.00 Set a 7th corner post from which
 a Bech 15 in. diam. - bear S 16 E. 16 lbs. dist. to
 a Sugar 6 " " N 11 E. 10 " "
 62.00 a dry branch 15 lbs. wide corner N. W.
 80.00 Set post corner to Sec. 8, 9, 16 & 17 from which
 a Bech 12 in. diam. - bear N 15 E. 14 lbs. dist. to
 a N. Oak 12 " " S 63 W. 16 " "
 Land hilly, Oak, Bech, Sugar, Poplar &c.

I certify that the foregoing Transcript of the field
 notes of Township N. 9. North of Range No. 1 West
 of the 2nd Principal Meridian, has been compared with the Original notes in the
 files of the General Office,
 Cincinnati Oct. 20 1841
 Sur. Genl.